

Feather River Regional Flood Management Plan *Overview*

Butte County Water Commission
April 3, 2013



**Marysville
Levee
Commission**

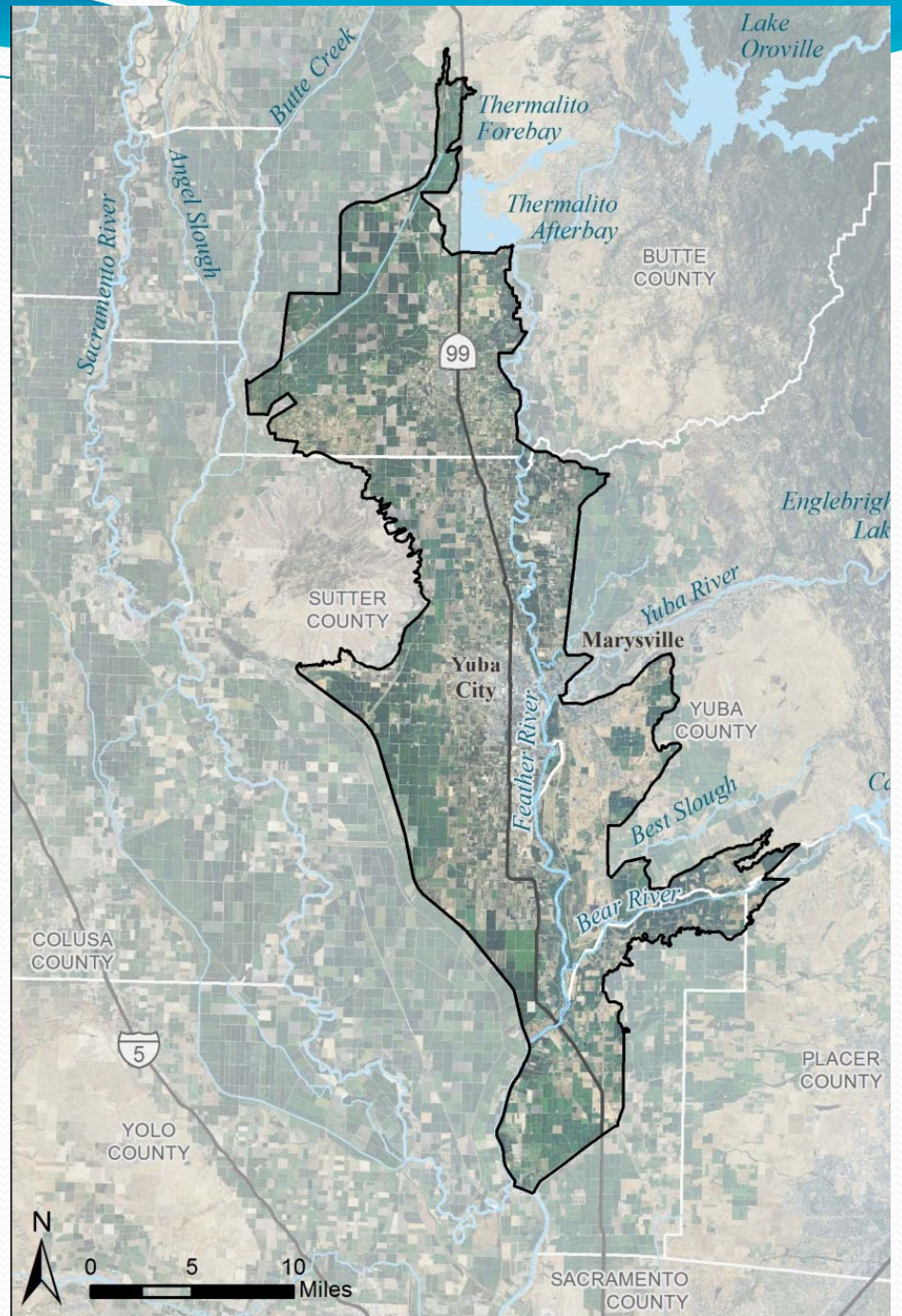




Background

- 2012 Central Valley Flood Protection Plan
- **Regional Flood Management Plans**
- Basin-wide Feasibility Studies
- 2017 Central Valley Flood Protection Plan

Feather River Regional Boundary



Memorandum of Understanding

Partner Agencies:

- Sutter Butte Flood Control Agency (SBFCA)
- Marysville Levee Commission (MLC)
- Three Rivers Levee Improvement Authority (TRLIA)
- Yuba County Water Agency (YCWA)



**Marysville
Levee
Commission**



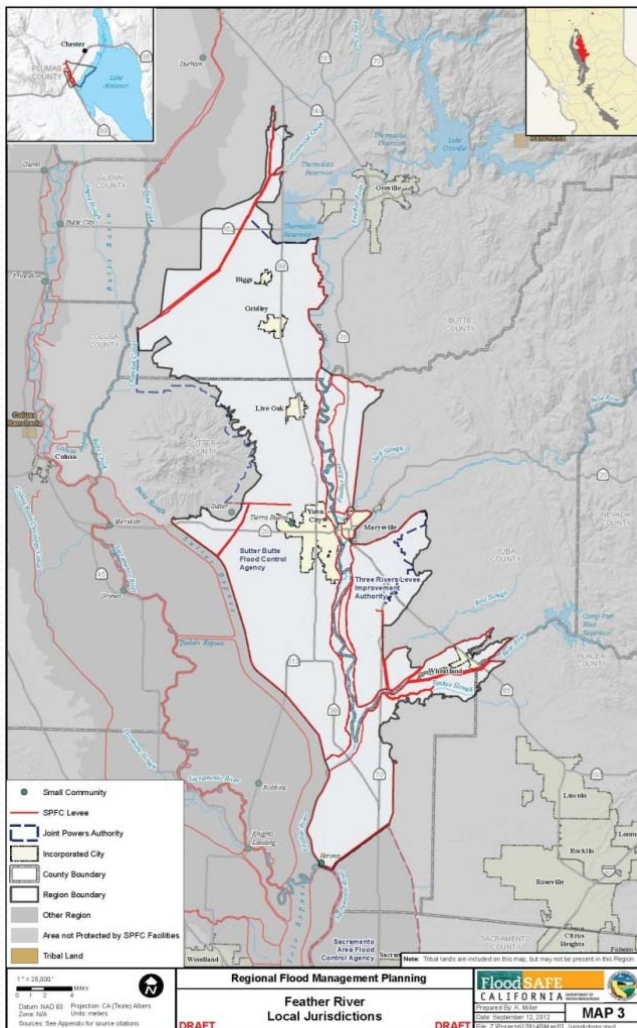
Feather River

Regional Flood Management Plan

- **Purpose:** Build upon the CVFPP by obtaining more region-specific information and local input for long term implementation of a sustainable and integrated flood risk reduction program in the Central Valley
- **Duration:** 18 months
- **Budget:** \$1.1M

Feather River Regional Stakeholders

- 4 Counties – Sutter, Yuba, Butte, and Placer
- 6 Cities – Yuba City, Live Oak, Biggs, Gridley, Marysville, and Wheatland
- 3 Flood Control Agencies – Sutter Butte Flood Control Agency (SBFCA), Three Rivers Levee Improvement Authority (TRLIA), and the Yuba County Water Agency (YCWA)
- 9 LMAs – RD's 10, 784, 817, 2103, 1001, LD 1, LD 9, and the Sutter Yard (MA 5, 7, 13, & 16) **TE1**
- 2 Small Communities – Rio Oso and Nicolaus
- 21 Currently identified Stakeholder Groups – Including Farm Bureau, Growers, Enterprise Rancheria, Environmental groups/NGOs, Water groups, Chambers of Commerce, Schools, Building and Realty groups, and Citizen and Neighborhood associations



Slide 6

TE1

Only 8 listed - missing Marysville Levee District

Thomas Engler, 4/2/2013

Coordinating Committee

- Steve Lambert primary; Bill Connelly alternate (SBFCA/Yuba City)
- James Gallagher primary; TBD alternate (SBFCA/Sutter County)
- Dave Lamon primary; Al Montna alternate (SBFCA/LMAs)
- Mary Jane Griego primary; John Nicoletti alternate (YCWA/TRLIA/Yuba County)
- Patrick Ajuria primary; Jerry Crippen alternate (Marysville Levee District)
- Roger Abe primary; Sardeep Atwal alternate (YCWA/Yuba County)

Agency Staff: Curt Aiken, ^{TE2} Robert Bendorf, Paul Bruner, Mike Inamine

Slide 7

TE2

Aikens, not Aiken

Thomas Engler, 4/2/2013



Feather River RFMP Team

- MBK Engineers – Program Management
- GEI – Plan Formulation and Engineering
- Downey Brand – Strategic Planning and Legal
- Kim Floyd Communications – Public Outreach
- Seth Wurzel Consulting – Finance Plan
- Environmental & Agricultural Team
 - ICF International – Team Lead
 - Ascent Environmental, HDR, H.T. Harvey, Westervelt, and CBEC



Planning Approach

- Hazards
- Consequences
- Actions and projects to address risk
- Priorities
- Residual Risk and Floodplain Management
 - O&M
 - Emergency Response Planning
 - Land Use and Environmental Enhancement
- Financial Plan



Key Elements

- Urban Flood Management Projects
- Alternatives to meet FEMA 100-year requirements for Small Communities
- Rural Levee Repairs
- Non-structural measures and improved emergency response
- Agricultural preservation
- Ecosystem enhancement, including evaluation of environmental enhancements through agricultural modifications TE3
- Coordination with parallel system-wide TE4 planning by DWR
- Local, state and federal financing

Slide 10

TE3 Suggest revising "...through agricultural preservation and/or modifications."

Thomas Engler, 4/2/2013

TE4 Suggest either Basin-wide or System Improvements so as not to confuse with SWIFs. SWIFs are not funded by the State.

Thomas Engler, 4/2/2013

Regional Considerations

- Coordination with System-wide ^{TE5} improvements being studied by both the Regional agencies and DWR
- Data gaps in rural and small community areas
- How do we effectively engage the Public
- Evaluate how agriculture can be integrated to achieve habitat objectives of the CVFPP ^{TE6}

Slide 11

- TE5** Suggest either Basin-wide or System Improvements so as not to confuse with SWIFs. SWIFs are not funded by the State.
Thomas Engler, 4/2/2013
- TE6** Suggest adding: "while minimizing impacts to agricultural lands."
Thomas Engler, 4/2/2013



Outreach Approach

- Stakeholder identification
- Feather River Regional Plan website: <http://frrfmp.com/>
- Regional plan hotline: 530-845-5988
- Small-group meetings
- Planning meetings (governance)
- Public workshops (3)
- Updates to Cities/Counties/Resource Agencies
- Outreach materials (electronic communications)



Financial Plan

- high TE7 level analysis evaluating the financial feasibility of implementing the identified and prioritized projects
- Three key steps:
 - Review regional economic setting and growth profile of the region
 - Evaluate potential non-local funding sources
 - Identify and evaluate feasibility of identified local funding sources

Slide 13

TE7

Editorial - capitalize High

Thomas Engler, 4/2/2013



Agricultural Preservation & Ecosystem Enhancement Principles

- Ensuring viable and sustainable agriculture will be a primary component of the RFMP
- Solutions seek to harmonize achieving habitat objectives of the CVFPP while preserving agriculture, native biodiversity, flood management, recreation, and other existing land uses of the Region
- Consistency with other habitat planning efforts in the region

Questions?





Financial Plan

- Funding will be categorized based on short-, medium-, & long-term sources and need
- Analysis will include
 - General ability of local agencies/beneficiaries to pay (i.e. funding capacity analysis) for short term projects;
 - Identification of medium & long-term potential funding sources; and
 - General ability to fund long-term operations & maintenance.
- Analysis will not include
 - detailed financing plans for local projects; or
 - LMA specific financial analysis or capability.



Agricultural Preservation & Ecosystem Enhancement: Solutions

- Holistic resource management approach for land use, flood management, water supply, and habitat
- Creative partnerships with the farming, environmental, and sportsman communities based on collaborative engagement
- Combining easements for conservation, flowage, and farming
- Ag-specific tools:
 - Wildlife-friendly crop types and management techniques
 - “Safe-harbor” agreements to allow continued farm practices
 - Establishing buffers and habitat-rich farm margins
- Identification of long-term parcel optimization to determine best areas for farming and habitat (similar to habitat conservation plan process) to phase-in preferred use
- Evaluate enhancement of existing habitat before evaluating over “new” habitat